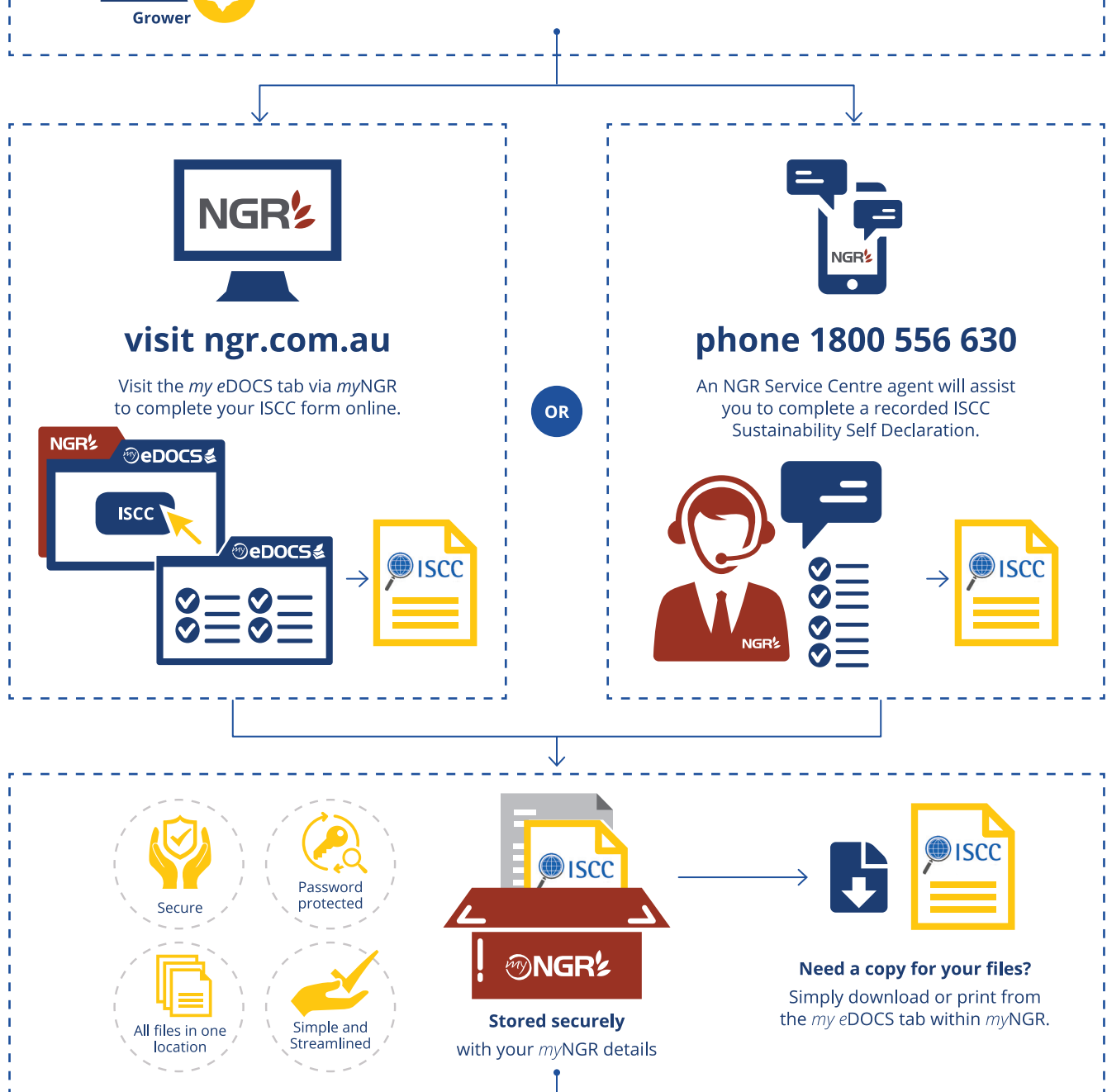




Do you need to make an ISCC Declaration?

If you have a contract or are intending to sell your Canola as 'sustainable' with a member of Sustainable Grain Australia, you will need to complete a Sustainability Declaration.



Allows access by participating Data Subscribers you are selling to.



Frequently Asked Questions

BACKGROUND INFORMATION

What is ISCC?

ISCC is the certification system used by Sustainable Grain Australia (SGA) to be declared sustainable, and have access to the premiums associated with the European market.

Further information can be found at www.iscc-system.org or give SGA a call on 0433 599 228.

Why is it important?

Australia's primary export zone for canola is the European Union, which has specific criteria surrounding the origination of oilseeds used for bio-energy. Any seed cultivated externally to the EU and used in the biofuel market must be declared and certified as being sustainable and in compliance with the European Union Biofuel Directive. Including a certification that the canola is sourced from sustainable and renewable origins.

COMPLETING YOUR ISCC SUSTAINABILITY DECLARATION USING THE NGR SYSTEM

How does doing it through NGR make it simpler?

It reduces duplication as you only have to complete one form, which can be used by any Trader who is a member of SGA.

How can I make my sustainability declaration?

There are two ways in which you can declare your sustainability.

- Login to myNGR, select the eDOCS tab and follow the prompts.
- Complete a recorded phone sustainability declaration, by calling the NGR Service Centre team on 1800 556 630.

Can I fill out a paper based ISCC Sustainability Declaration?

No. Paper based ISCC Sustainability Declarations will not be available or accepted.

Can I use an old ISCC Self declaration form?

No. You can only complete your 2019 ISCC Sustainability Declaration via myNGR or a recorded phone declaration with the NGR Service Centre Team.

What should I do if the prepopulated information on the Form is incorrect?

You will need to save a draft of the Form (if doing it online) go back into your NGR Record and update the relevant information. You can then return to your draft, and the information will be updated.

How does my trader/marketer access my ISCC Sustainability Declaration?

Once you have a contract or made a delivery with the Trader, ensure they have the correct NGR card number.

They will log in to the secure myNGR online portal and use your NGR card number to subscribe, accessing your ISCC Sustainability Declaration.

Can all Data Subscribers of NGR see my ISCC Sustainability Declaration?

No, they cannot. To be able to access your ISCC Sustainability Declaration:

- the Trader must be a Data Subscriber of NGR;
- you must have provided them with your NGR card number, and;
- they need to be a member of SGA.

If I deal with more than one Trader, can they both see my ISCC Sustainability Declaration?

Yes, as long as they meet the conditions shown above.

Who do I contact if I need help filling out my ISCC Sustainability Declaration?

Please call the NGR Service Centre team on 1800 556 630, and they will be able to help you in completing our Form online via myNGR or take a recorded phone sustainability declaration from you.

THE SUSTAINABILITY REQUIREMENTS AND THE AUDIT

What are the Sustainability Requirements?

Essentially the requirements are demonstrating that you have sustainably produced the crop, by following good agricultural practice.

They ensure that your grain has not been grown on land converted after 2008 from areas such as: primary forest or wooded land, nature protected areas, highly biodiverse grasslands, wetlands and peatland.

Examples of typical documentation required to demonstrate your sustainability, includes: spray diaries or your agronomist's recommendations, soil tests, paddock records.

If you were to be audited, you would need to be able to show the auditor and/or have a discussion how your chemicals and fertilisers are stored, applied and disposed of and how you address the occupational health, safety and the welfare of your employees.

Should I complete the self-declaration if I cannot meet the sustainability requirements?

No. If you have any doubts on whether you can meet the requirements, please call Sustainable Grain Australia on 0433 599 228, to discuss it further.

I heard I might be audited, please tell me more.

For any questions regarding the audit and selection process, please contact Sustainable Grain Australia on 0433 599 228.